

CERTIFICATE OF LOCATION OF GOVERNMENT CORNER

NORTHEAST Corner of Section 13, Township 107, Range 40, 5TH P.M.

STATE OF MINNESOTA, County of MURRAY

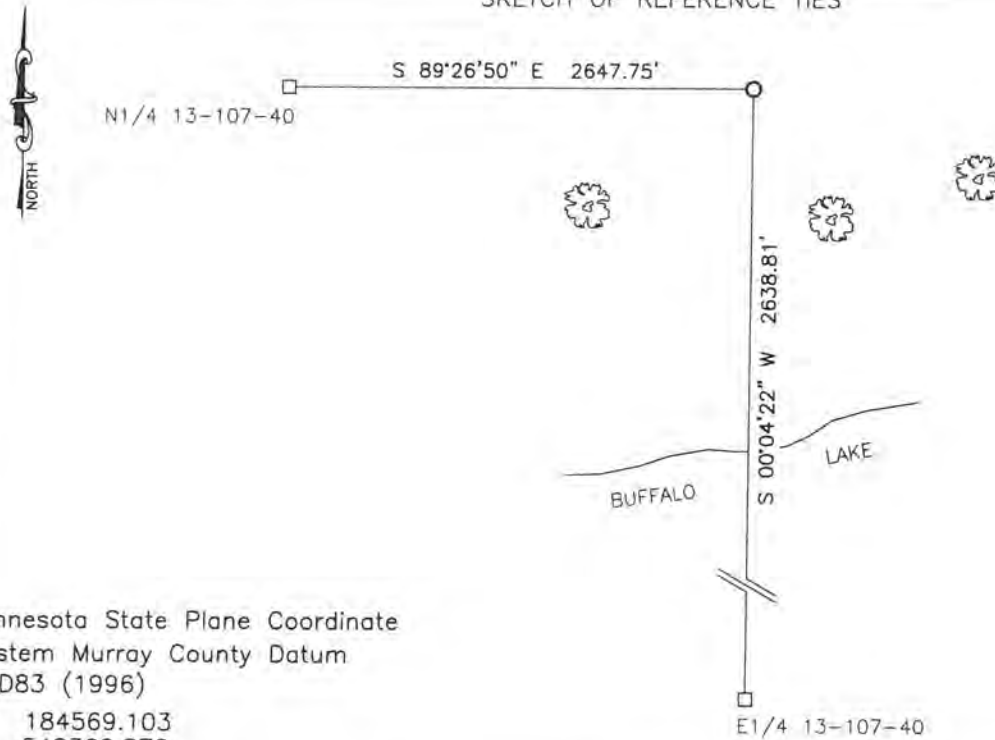
At the corner location shown on the sketch:

On 7/18/17 found a DNR monument

left monument as found, lowered monument, removed monument (explain)

On _____ placed a _____

SKETCH OF REFERENCE TIES



Minnesota State Plane Coordinate System Murray County Datum NAD83 (1996)
N: 184569.103
E: 548360.872

Statement of evidence relative to this corner location is on back of page.

I hereby certify that this document and the data contained herein was prepared by me or under my direct supervision.

[Signature] 9/18/17
SIGNATURE DATE

Registration No. 43844

- Land Surveyor, Professional Engineer
- County Surveyor, County Engineer

STATE OF MINNESOTA, } ss.
COUNTY OF MURRAY, }

I hereby certify that the within Instrument was filed in this office for record on the 12th day of OCTOBER A.D. 20 17 at 11:00 o'clock A. M. and was duly recorded as Document No. _____

Evelyn C. Larson
County Recorder

Statement of Evidence

In 1861, J.W. Myers did the original survey of the east line of the township.

In 1907, J.W. Woolstencraft found nothing at the corner.

In 1985, the D.N.R. Bureau of Engineering found nothing at the corner.

On June 23, 1991, the D.N.R. Bureau of Engineering set a 3/4" x 24" rebar with aluminum cap stamped "D.N.R. SURVEY MARKER" midway and on line between the East Quarter of Section 12-107-40 and the East Quarter of Section 13-107-40.

On July 18, 2017, Bueltel-Moseng Land Surveying found a D.N.R. Monument with aluminum cap stamped "D.N.R. SURVEY MARKER."